

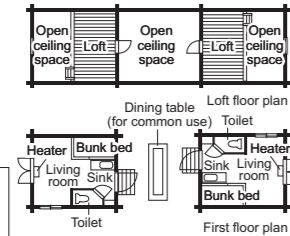
Accommodation guide

The Nature Village offers three types of accommodation facilities where visitors can enjoy family get-togethers and intergroup exchanges during their experiential stay. There are also two wheelchair-accessible accommodations: one cottage and one tent house.

Yacho-no-ie (wild bird house) site Yacho-no-ie cottages



Each of the ten cottages named after wild birds, such as *Uguisu* (Japanese bush warbler) and *Kakko* (cuckoo), has two rooms with a loft-type interior filled with the aroma of timber. Cottages come with a kitchen, toilet and heating. One of the cottages is wheelchair-accessible (separate reception).

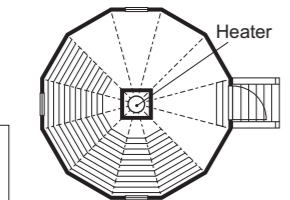


Interior: sink, flush toilet, low table, blankets/camping mats/cushions (5 each), bunk beds on the first floor, heater (vented kerosene), refrigerator
Exterior: tables, chairs, iron garbage storage box (for protection from wild animals)

Hoshi-no-ie (star house) site Tent house: Hoshi-no-ie



Tent houses at the Nature Village have a structure based on a traditional Mongolian ger and are made with thick tent fabric. Each is named after a constellation, such as Orion and Pegasus. These one-floor structures with high ceilings have a heater but no sink or toilet. Please use those located in the building for outdoor cooking and the restroom building.



Blankets/camping mats/cushions (7 each), iron garbage storage box (for protection from wild animals), heater (pot-type)

Tent sites (special) Cabin



There are five-person log cabins at some of the tent sites. Together with the 6 x 6 m tent site, ten people can be accommodated. Please bring battery-operated lanterns or similar items as there is no lighting.

Blankets/camping mats (5 each), iron garbage storage box (for protection from wild animals)

Tent sites (normal)



Visitors can bring their own camping tents to the sites. In total, there are 22 sites measuring 6 x 6 m each. (When using a tarpaulin or screen tent, two sites may be necessary.)

Iron garbage storage box (for protection from wild animals)

Facility use fees

Facility	Unit	Capacity	Use fee	
			Overnight	Day use
Cottage	1 room	5 persons	4,700 yen	1,600 yen
Tent house	1 tent	7 persons	3,900 yen	1,300 yen
Tent site	Normal site	1 site	500 yen	170 yen
	Special site (cabin)	2 sites	1,000 yen	340 yen

Hours

- Accommodation: 13:00 – 11:30 on the following day
- Day use: 9:00 – 17:00

Booking

Reception

Reception by phone begins on the same day two months prior to the date of use (starting date of booking reception) (hours: 9:00 a.m. – 5:00 p.m.). However, if the starting date of booking reception is a Saturday, Sunday or national holiday, reception by phone will start on the following day.

Maximum number of facilities that can be booked on the starting date of booking reception

A limited number of facilities can be booked for each phone call made on the starting date of booking reception. Please note that you will need to call again if the number of facilities you wish to book is larger than the limit.

- Cottage: up to 4 (max. 20 persons)
- Tent house: up to 4 (max. 28 persons)
- Tent site: up to 4 (max. 20 persons)

Acceptance of groups

The Jozankei Nature Village is mainly for families and small groups, with only one large group accepted per day. The maximum number of persons in a group is as follows:

- Weekdays: approx. 70 to 100 persons
- Saturdays/Sundays/national holidays, spring/summer/winter holidays: approx. 50 persons

Cancellations

Please note that if you wish to cancel your booking but do not contact the Nature Village by 5:00 p.m. on the day six days prior to the day of use, you will have to pay the facility use fee in full (calls accepted between 9:00 and 17:00).

E.g., If your booking is for April 7, you will need to contact the Nature Village by 5:00 p.m. on April 1 to avoid payment of the cancellation fee.

Deadlines for changes/cancellations

Day (of the week)	Mon.	Tues.	Wed.	Thurs.	Fri.	Sat.	Sun.
Six days before (until 5:00 p.m.)	Tue.	Wed.	Thurs.	Fri.	Sat.	Sun.	Mon.

The cancellation fee must be paid by either of the following methods within two weeks of notifying the Nature Village of the cancellation.

1. Payment into the designated bank account (the user must pay for any bank charges incurred).
2. Cash payment at the Jozankei Nature Village [reception counter (9:00 – 17:00)]

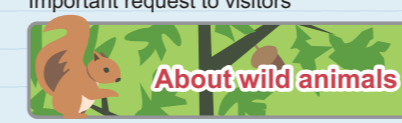
Also featuring behind-the-scenes stories

News
Nature Village Blog



Important request to visitors

About wild animals



Places to visit on your way home from Nature Village

Surrounding areas



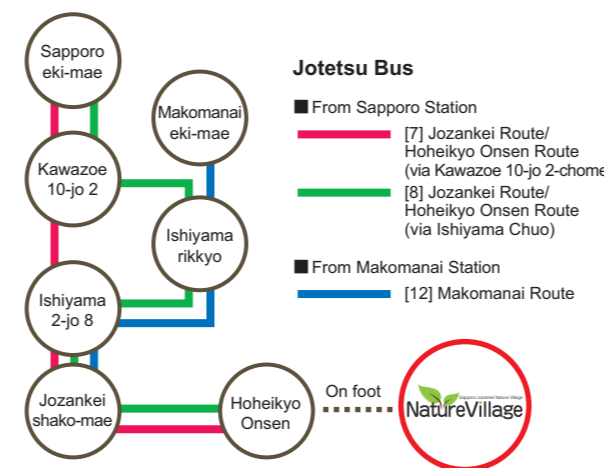
Full of the latest information

Make the most of your visit to Nature Village!
Event information



For details, please visit the Nature Village website!

<http://www.sj-naturevillage.jp>



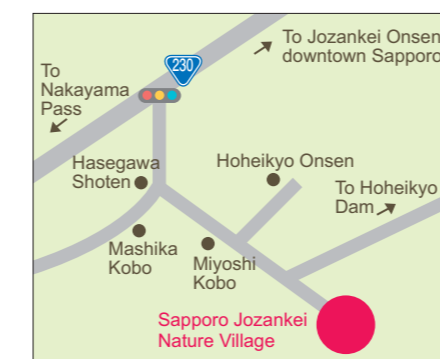
Public transportation

If you use public transportation, please take a Jotetsu bus from Makomanai subway station or Sapporo Ekimae Bus Terminal.

If you take a bus from Makomanai, change to the Hoheikyo Onsen Route at the Jozankei Shako-mae stop. The Nature Village is a 2.5 km walk from the Hoheikyo Onsen stop (approx. 30 min.).

For timetables and other information, please see the Jotetsu Bus website.

<http://www.jotetsu.co.jp/bus/>



Sapporo Jozankei Nature Village

For inquiries

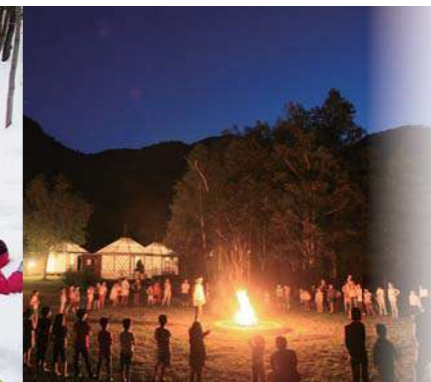
Tel.: 011-598-3100 Reception hours: 9:00 – 17:00

Jozankei, Minami-ku, Sapporo, Hokkaido 061-2301 (national forest land downstream from Hoheikyo Dam)

Designated manager: Sapporo Youth & Women's Activity Association (SYAA)
Miyanosawa 1-jo 1-chome 1-10, Nishi-ku, Sapporo 063-0051



Learn



Play

NatureVillage

Sapporo Jozankei Nature Village

A first-hand nature experience facility where visitors can come into contact with not only seasonal natural features but also flora and fauna



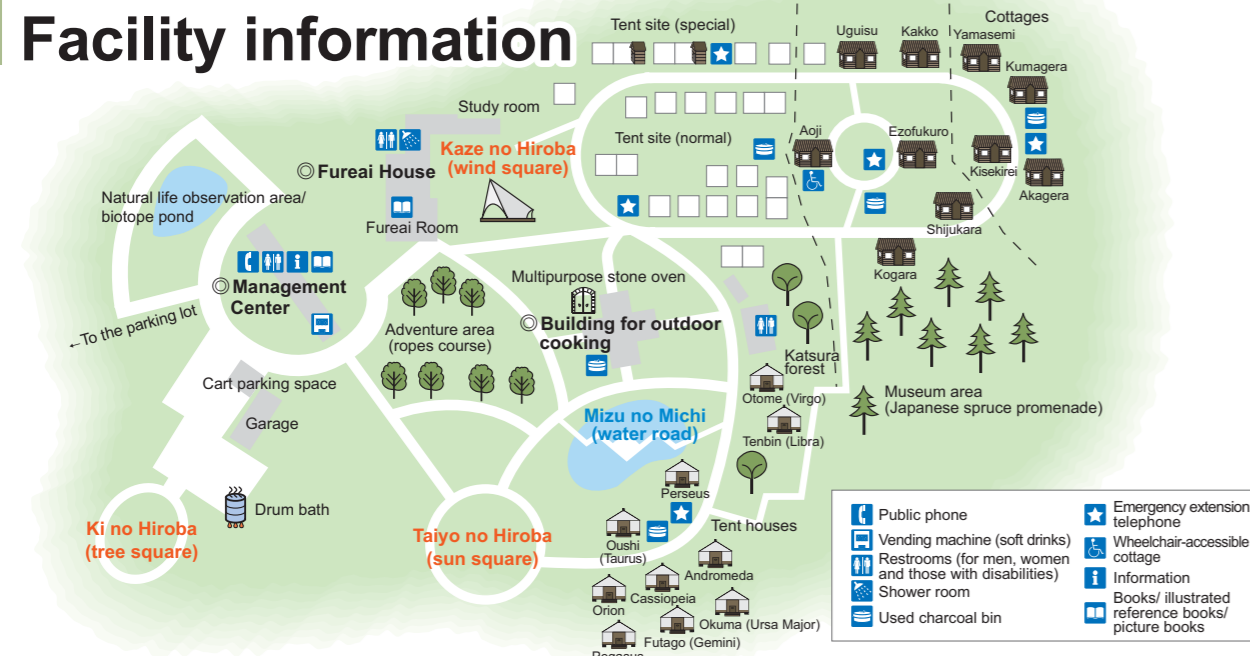
Eat



Stay

Designated manager:
Sapporo Youth & Women's Activity Association (SYAA)

Facility information



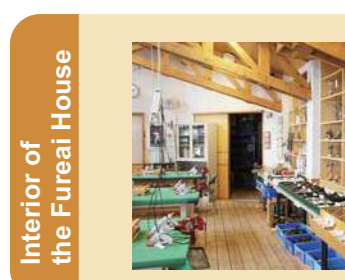
Management Center
Procedures to be completed for use of the Jozankei Nature Village are handled here. Applications for programs and borrowing of bedding and other items are also accepted. If you have any problems during your stay, please be sure to consult the staff here. Staff and/or security workers are available 24 hours a day. Although there are no shops in the Village, charcoal, gas cylinders for portable stoves and other items are available at the Center at cost.



Fureai House
The staff provide instructions and advice on precautions to be taken during outdoor activities and other matters. The study room has a wide range of nature observation and outdoor-related books. Vending machines for soft drinks and showers (fee-based) are also available in the Fureai House.



Mizu no Michi (water road)
Visitors can observe water creatures while strolling along the trail across the pond.



Study room
This is where Mori no Kosakukai (forest craft classes) are held.



Fureai Room
The multipurpose hall can be used by both visitors staying at the Village and day-use visitors.



Kaze no Hiroba (wind square)
The triangular tent at the center of the square is one of the landmarks of Jozankei Nature Village.



Taiyo no Hiroba (sun square)
The square adjoining the Hoshi-no-ie site has a campfire space and can also be used as an outdoor stage.



Building for outdoor cooking
The cooking area is for common use by visitors who cook meals or for participating in camping pot or stone stove cooking experiences.

Hands-on programs

Jozankei Nature Village offers a variety of programs for visitors to enjoy. (The programs available vary by season. For details, please visit the Village's website or inquire by phone.)

GUIDED PROGRAMS

■ Staff and volunteer guides provide guidance.

Mori no Kosakukai (forest craft classes)
Visitors can make handicrafts using twigs, nuts and other natural materials. The type of handicraft, such as insect/animal ornaments and pendants, can be selected depending on the age of the visitor and time available.

Place	Participation fee	Hours	Capacity	Dates
Study Room	500 yen /piece	9:00 – 11:00 (reception until 10:30) 13:00 – 16:30 (reception until 16:00)	No limits	Every day

Camping pot experience
Family or group members work together to cook rice. Why not try cooking rice in camping pots over fire using firewood you've cut on your own with a hatchet?
(Bring your own rice, gloves and camping pot.)

Place	Participation fees
Building for outdoor cooking	2,000 yen per pot (new pot that can be taken home) 1,000 yen (rental pot) 500 yen (using the visitor's own pot(s); up to three pots)

Start time	Capacity	Dates
16:00 (reception until 17:30)	Approx. 10 groups	Every day

Mori no Kansatsukai (forest observation party)
Why not learn about the forest through nature observation on the surrounding walking trails and other activities?
*May be cancelled due to bad weather.

Place	Participation fee	Duration
Field around Nature Village	Free (200 yen/person if snowshoes are needed)	9:00 – 10:00

Capacity	Dates
approx. 10 groups	Every Sunday/every day during the summer vacation period for elementary schools in Sapporo

Ginga no Kai (Galaxy party)
Why not gaze at the moon, planets and star-filled sky using an astronomical telescope or binoculars?
- For the schedule, please see the event calendar or inquire at the Nature Village.

Place	Participation fee	Duration	Capacity	Dates
Taiyo no Hiroba, etc.	Free	Approx. 30 min. after the end of the night program	No limits	Once a month or so

Night programs
Nature experience programs at night, such as night hiking, night café and night meetings, are offered to make the most of all four seasons.

Place	Participation fee	Hours
Fields around the Nature Village	Free (if snowshoes are necessary, 200 yen per pair)	19:30 – 20:30

Capacity	Dates
No limits	Every Saturday in March, April, November and December and when campfire is cancelled

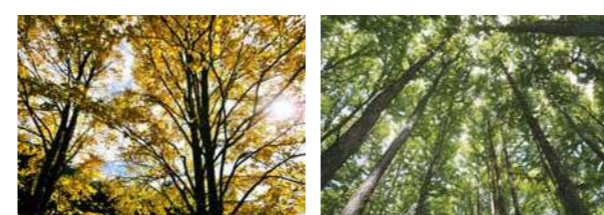
Campfire
Come enjoy singing and playing recreational games around the fire. The Nature Village staff create a fun evening. Not held during times of bad weather or in March, April, November and December.

Place	Participation fee	Hours	Capacity	Dates
Taiyo no Hiroba, etc.	Free	19:30 – 20:30	No limits	Saturdays in May to October, January and February

Every day during the summer holidays of elementary schools in Sapporo

Guided programs for groups
The Nature Village staff support group activities. Please inquire at the time of booking. (Programs may include nature strolls, campfires, cooking rice in camping pots and other activities.)

Place	Participation fee	Capacity	Dates
Fields around the Nature Village	3,000 yen	20 persons	Whenever an application is submitted



Other events to enjoy seasonal features are also offered occasionally. For details, please visit the Nature Village website or inquire by phone.
[HP] <http://www.sj-naturevillage.jp>

SELF-LED PROGRAMS

■ Programs for visitors to enjoy by themselves

Stone oven cooking experience (may be booked in advance)
Special multipurpose ovens are available for hourly rent. Bake pizza, bread or whatever you like. (Please bring your own ingredients.)



Place	Participation fee
Building for outdoor cooking	(per oven, per section): 1,000 yen (with a door)/ 500 yen (without a door)

Hours	Capacity	Dates
Hours: 1 section, 90 minutes (1) 9:00 – (2) 14:00 – (3) 16:00 – (4) 18:00 –	approx. 10 groups/day	Every day

(Items available for loan) paella pan, plates, turners, leather gloves, fire tongs, cotton working gloves, matches

Adventure Area & Museum Area
► **Adventure Area**
A ropes course has been created in the birch forest in front of the Fureai House. It has added ropewalking, swings and other new activities to the Village.
► **Museum Area**
Why not take a walk through the Japanese spruce forest? If you're lucky, you might even encounter squirrels or birds.



Place	Participation fee	Capacity	Dates
Adventure area A space where a ropes course, wooden bridges and more can be enjoyed. Museum area A place to observe trees, wild plants, small animals, and more.	Free	No limits	Every day

Wakuwaku Rally
Answer questions in the Village to win a participation prize! Find a Yatta Bear-kun to get the Wakuwaku card. What color Yatta Bear-kun can you find?



Place	Participation fee	Capacity	Dates
On the premises of the Nature Village	Free	No limits	Every day

Drum bath experience (may be booked in advance)
Would you like to try heating up the water together with your friends or family and taking a drum bath? A dip in the bath after a good sweat is especially pleasant.



Place	Participation fee	Hours	Capacity	Dates
Ki no Hiroba	1,000 yen	(1) 9:00 – 11:00 (2) 14:30 – 16:30 (3) 17:00 – 19:00	6 groups/day	Every day between June and September

Snow programs
► **Sleigh riding/tube sliding**
Ride a sleigh or a tube to slide down the specially made slope. Have fun as you get covered in snow.



Place	Participation fee	Capacity	Dates
In the Village	Free	No limits	Every day between January and March

► **Snowshoe fiegel (sliding snowshoes)**
Why not go for a walk in areas where you can only go during the snowy season? There is so much to see, including animal footprints and winter leaf buds. There are also spots where you can slide down on your bottom.



Place	Participation fee	Capacity	Dates
In the Village and surrounding fields	200 yen/set	No limits	Every day in winter

Experience cooking rice in a camping pot for yourself
You can take your time and experience cooking rice in a camping pot with your family or in a group. In addition to those with experience, those who would like to try it on their own are also welcome.



Place	Participation fee
Building for outdoor cooking	500 yen (Bring your own camping pot, rice, gloves and other items necessary for cooking.)

Starting time	Capacity	Dates
10:00 – 17:00 (reception until 16:00)	Approx. 5 groups	Every day

Roads

Interior of the Fureai House